

Natchez Trace State Park

Legend

- Interstate
- Highway
- Rural Road
- Gravel Rd (Trail)
- Park Road
- Trail
- Stream
- State Park
- State Forest

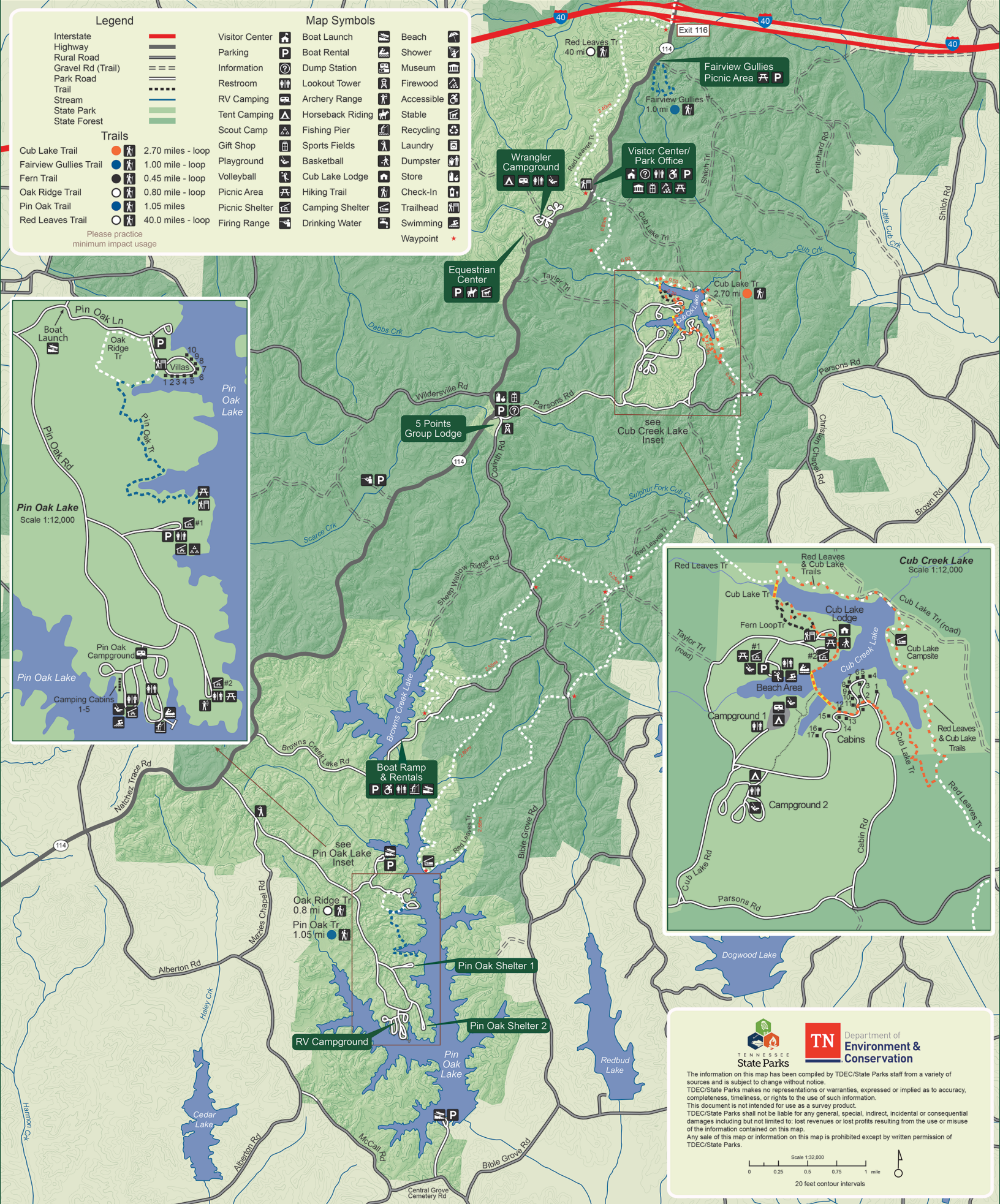
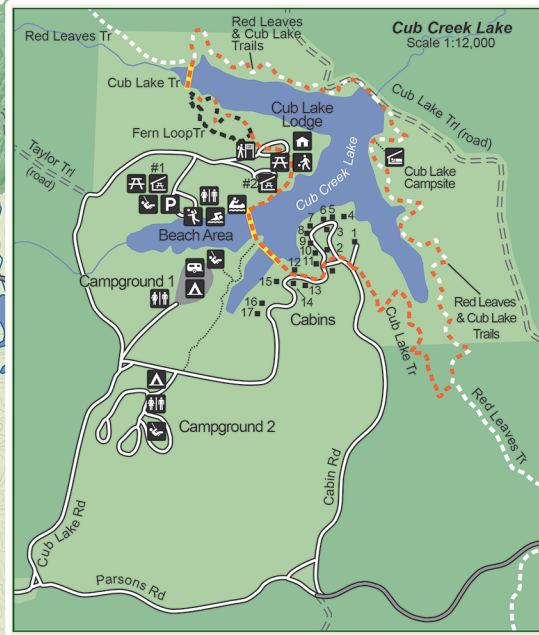
Trails

- Cub Lake Trail 2.70 miles - loop
- Fairview Gullies Trail 1.00 mile - loop
- Fern Trail 0.45 mile - loop
- Oak Ridge Trail 0.80 mile - loop
- Pin Oak Trail 1.05 miles
- Red Leaves Trail 40.0 miles - loop

Please practice minimum impact usage

Map Symbols

- | | | |
|----------------|------------------|------------|
| Visitor Center | Boat Launch | Beach |
| Parking | Boat Rental | Shower |
| Information | Dump Station | Museum |
| Restroom | Lookout Tower | Firewood |
| RV Camping | Archery Range | Accessible |
| Tent Camping | Horseback Riding | Stable |
| Scout Camp | Fishing Pier | Recycling |
| Gift Shop | Sports Fields | Laundry |
| Playground | Basketball | Dumpster |
| Volleyball | Cub Lake Lodge | Store |
| Picnic Area | Hiking Trail | Check-In |
| Picnic Shelter | Camping Shelter | Trailhead |
| Firing Range | Drinking Water | Swimming |
| | | Waypoint |



The information on this map has been compiled by TDEC/State Parks staff from a variety of sources and is subject to change without notice. TDEC/State Parks makes no representations or warranties, expressed or implied as to accuracy, completeness, timeliness, or rights to the use of such information. This document is not intended for use as a survey product. TDEC/State Parks shall not be liable for any general, special, indirect, incidental or consequential damages including but not limited to: lost revenues or lost profits resulting from the use or misuse of the information contained on this map. Any sale of this map or information on this map is prohibited except by written permission of TDEC/State Parks.

