

# Meeman-Shelby Forest State Park

This brochure is funded in part through the Federal Highway Administration's Recreational Trails Program, administered by the Tennessee Department of Environment and Conservation, Recreation Educational Services Division, Greenways and Trails Program.

The information on this map has been compiled by TDEC/State Parks staff from a variety of sources and is subject to change without notice. TDEC/State Parks makes no representations or warranties, expressed or implied as to accuracy, completeness, timeliness, or rights to the use of such information. This document is not intended for use as a survey product. TDEC/State Parks shall not be liable for any general, special, indirect, incidental or consequential damages including but not limited to: lost revenues or lost profits resulting from the use or misuse of the information contained on this map. Any sale of this map or information on this map is prohibited except by written permission of TDEC/State Parks.

**Legend**

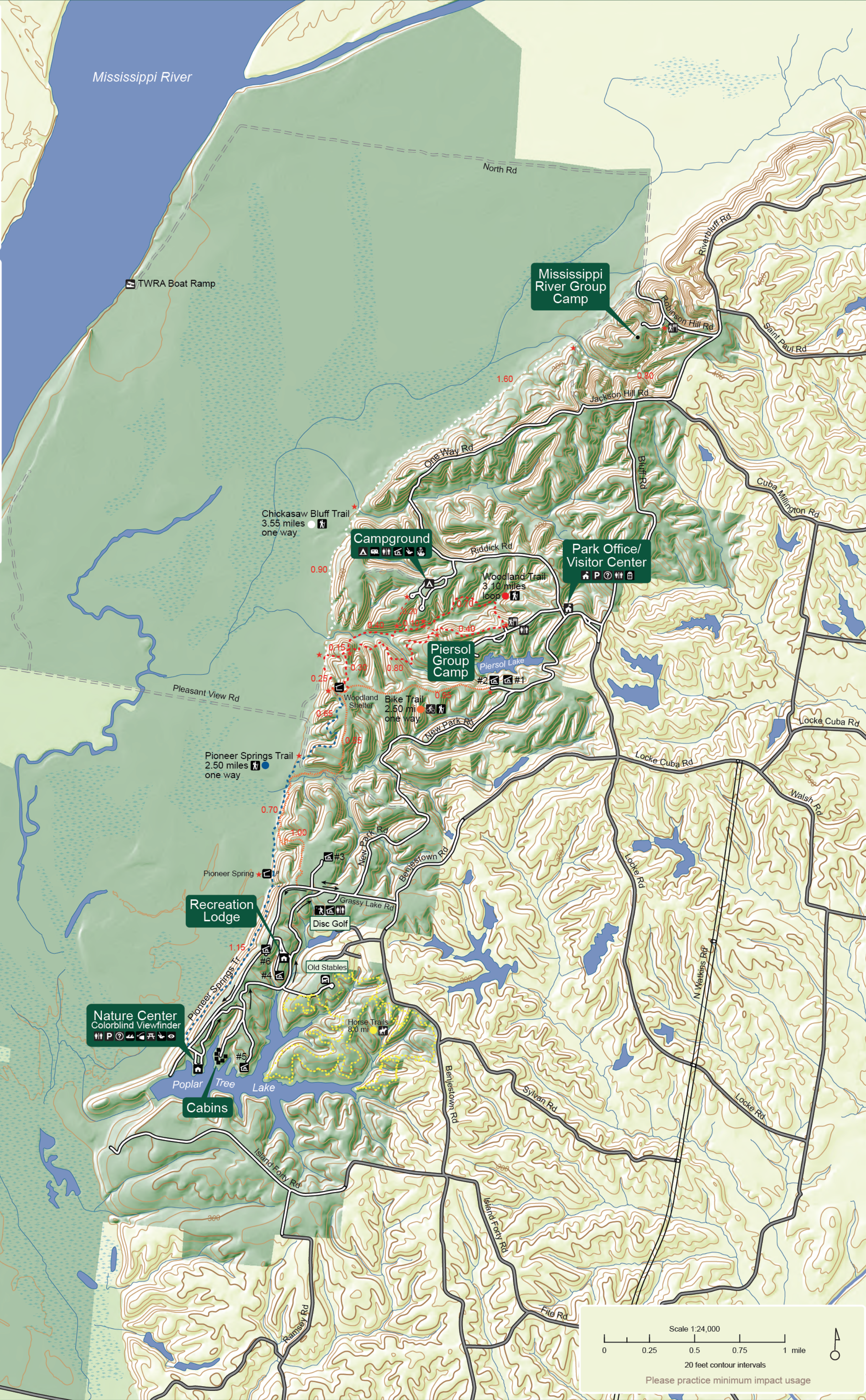
State Park		Stream	
TWRA		Hiking Trail	
Highway		Bike Trail	
Park Road		Horse Trail	
Rural Road			

**Trails**

Bike Trail		2.50 miles - one way
Chickasaw Bluff Trail		3.55 miles - one way
Horse Trails		8.00 miles - loop
Pioneer Springs Trail		2.50 miles - one way
Woodland Trail		3.10 miles - loop

**Map Symbols**

Visitor Center		Tent Camping		Trailhead	
Parking		RV Camping		Hiking Trail	
Information		Showers		Horse Trail	
Gift Shop		Disc Golf Course		Bike Trail	
Restrooms		Playground		Waypoint	
Picnic Shelter		Old Stables		Colorblind Viewfinder	
Picnic Area		Park Building			



Scale 1:24,000

0 0.25 0.5 0.75 1 mile

20 foot contour intervals

Please practice minimum impact usage