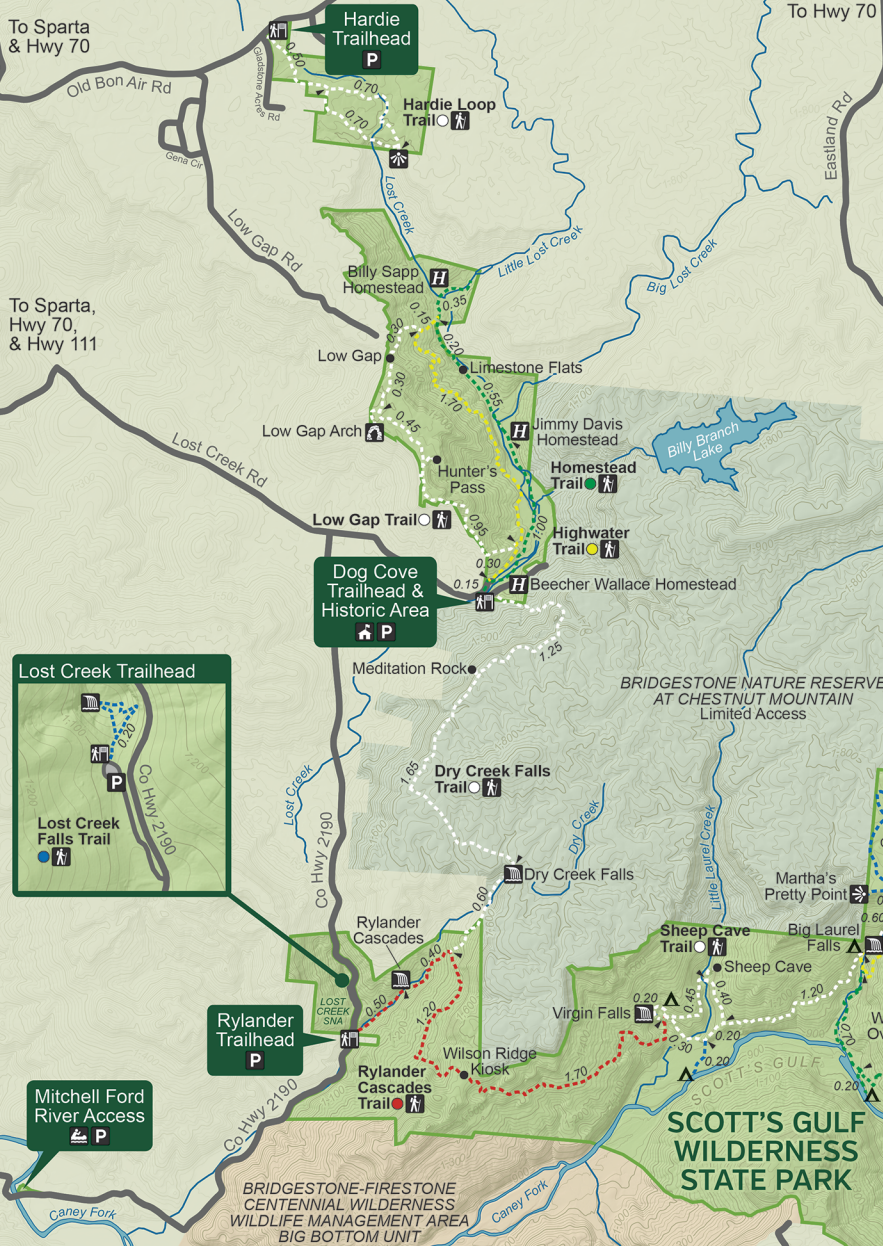


Scott's Gulf Wilderness State Park



Trails

- Virgin Falls Trail - 4.30mi one-way
- Sheep Cave Trail - 0.85mi one-way
- Upland Trail - 3.00mi one-way
- Hemlock Springs Trail - 1.35mi one-way
- Amber's Den Trail - 3.10mi one-way
- Rylander Cascades Trail - 3.80mi one-way
- Lost Creek Falls Trail - 0.20mi loop
- Dry Creek Falls Trail - 3.50mi one-way
- Homestead Trail - 2.25mi one-way
- Highwater Trail - 2.15mi one-way
- Low Gap Trail - 2.00mi one-way
- Hardie Loop Trail - 2.40mi loop
- Caney Fork Trail - 6.00mi one-way
- Holloway Connector Trail - 0.50 one-way
- Yellow Bluff Trail - 1.00mi one-way
- Polly Branch Trail - 2.55mi one-way

Legend

- Trail
- Road
- == Unimproved Road
- Waypoint
- Point of Interest
- Scenic View
- Historic Feature
- Ranger Station
- Hiking Trail
- Paddling Access
- Parking
- Trailhead
- Arch
- Waterfall

Please practice minimum impact usage

Scale 1:40,500

0 0.5 1 mile

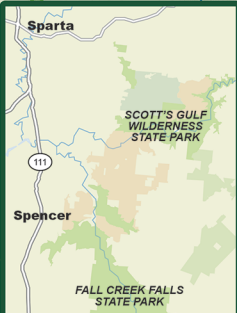
STATE PARK & NATURAL AREA

THE NATURE CONSERVANCY

BLEDSOE STATE FOREST

TWRA WILDLIFE MANAGEMENT AREA

Notice
All trails on TWRA Wildlife Management Area property are closed during scheduled hunts. Scan QR code for Bridgestone-Firestone Centennial WMA rules and regulations.



TN Department of Environment & Conservation

The information on this map has been compiled by TDEC/State Parks staff from a variety of sources and is subject to change without notice. TDEC/State Parks makes no representations or warranties, expressed or implied as to accuracy, completeness, timeliness, or rights to the use of such information. This document is not intended for use as a survey product. TDEC/State Parks shall not be liable or any general, special, indirect, incidental or consequential damages including but not limited to: lost revenues or lost profits resulting from the use or misuse of the information contained on this map. Any sale of this map or information on this map is prohibited except by written permission of TDEC/State Parks.

Points of Interest

Virgin Falls Trailhead 2080 Scott's Gulf Rd Sparta, TN 38583	Visitor Center 117 E Bockman Wy Sparta, TN 38583
Lost Creek Trailhead 3990 White's Cave Rd Sparta, TN 38583	Dog Cove Trailhead & Park Office 6747 Lost Creek Rd Sparta, TN 38583
Hardie Trailhead 2292 Old Bon Air Rd Sparta, TN 38583	

Scan QR Code to download an offline map on the Avenza Maps app